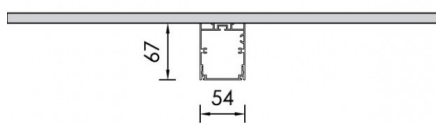


NOTUS 16 LINEAR LED



TECHNICAL DETAILS

| | |
|------------------------|----------------------------------|
| Housing : | Extruded aluminium |
| Diffuser : | Matt opal cover of extruded PMMA |
| Control Gear : | Built-in electronic driver |
| Watt : | Max 131.2W |
| Transmittance : | 70% |
| IP : | 40 |
| IK : | 04 |
| | • LED replacement with tools |

Colors



-10
White



-20
Black



-90
Anoxal matt



Wood 1



Wood 2

Accessories



CONVERSION
KIT+BATTERY



AUTO WIRE
SUPPORT BLOCK

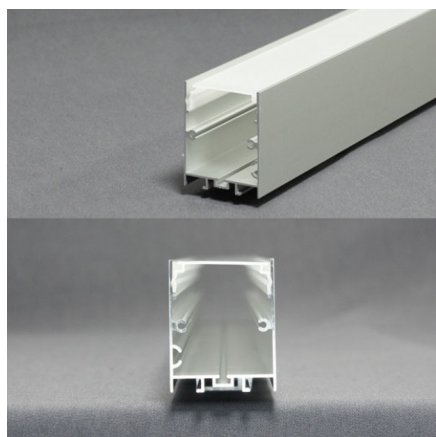
Lighting Sources

**1x Linear LED | CRI80**

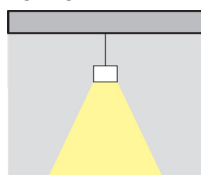
3000K / 4000K |

3step MacAdam | Ripple < 3% | Lifetime>50.000h | LM80 test report

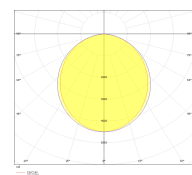
L max: 4554mm



Lighting



Photometric



Headoffice - Showroom: 13 Sofokli Venizelou Ave., Likovrisi, P.O. Box 14123, Athens, Greece. Tel: +30 210 28 51 304 Fax: +30 210 28 51 306

Factory - Financial Services: 5 Kefalovrisou Str., Monomati, Aharnai, P.O. Box 13677 Athens, Greece. Tel: +30 210 62 08 230 Fax: +30 210 62 08 262

website: www.bright.gr | **e-mail:** info@bright.gr