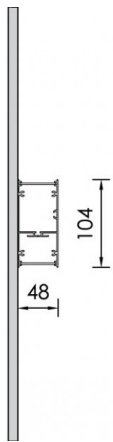
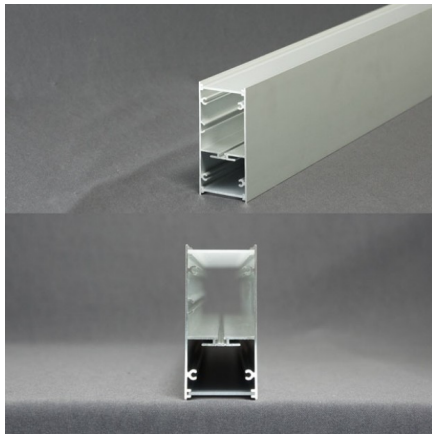


## NOTUS 17 WALL LINEAR LED

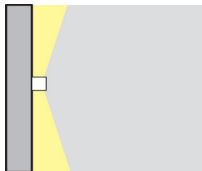


L max: 4500mm

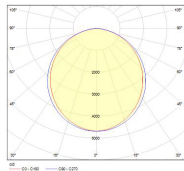
L max: 4551mm



Lighting



Photometric



## TECHNICAL DETAILS

<b>Housing :</b>	Extruded aluminium
<b>Diffuser :</b>	Matt opal cover of extruded PMMA
<b>Control Gear :</b>	Built-in electronic driver
<b>Watt :</b>	Max 2x131.2W
<b>Transmittance :</b>	70%
<b>IP :</b>	40
<b>IK :</b>	04
	• LED replacement with tools

## Colors

-10  
White-20  
Black-90  
Anoxal matt

Wood 1



Wood 2

## Lighting Sources

**2x Linear LED | CRI80**

3000K / 4000K | 3step MacAdam | Ripple &lt; 3% | Lifetime&gt;50.000h | LM80 test report

**For more info please see below at Linear LED PDF**
**Headoffice - Showroom:** 13 Sofokli Venizelou Ave., Likovrisi, P.O. Box 14123, Athens, Greece. Tel: +30 210 28 51 304 Fax: +30 210 28 51 306

**Factory - Financial Services:** 5 Kefalovrisou Str., Monomati, Aharnai, P.O. Box 13677 Athens, Greece. Tel: +30 210 62 08 230 Fax: +30 210 62 08 262

**website:** www.bright.gr | **e-mail:** info@bright.gr