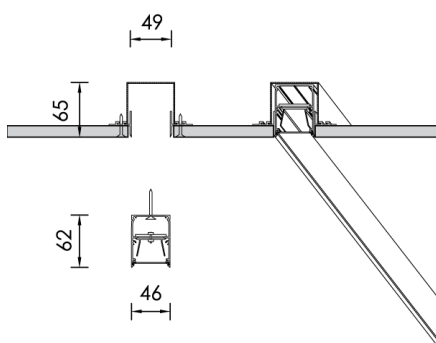
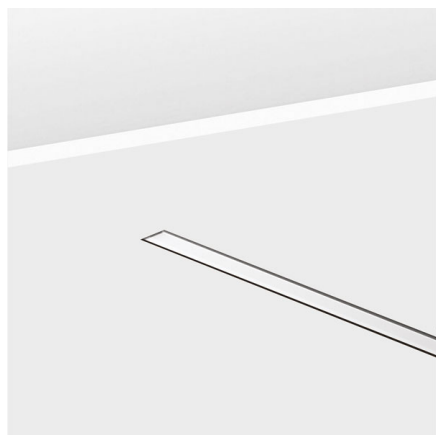


NOTUS 25 TRIMLESS A LINEAR LED



TECHNICAL DETAILS

Housing :	Extruded aluminium
Diffuser :	Extruded PMMA
Control Gear :	Built-in electronic driver
Transmittance :	70%
IP :	54
IK :	04
	• LED replacement with tools

Colors

-10 White	-20 Black	-90 Anoxal matt	-26 Copper

Accessories

CONVERSION
KIT+BATTERYCOVER
IP54

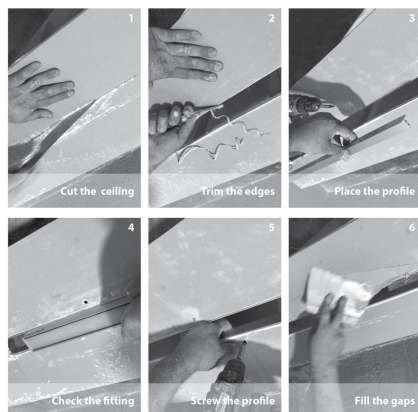
Lighting Sources

**1x Linear LED | CR180**

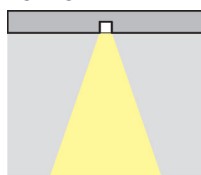
3000K / 4000K |

3step MacAdam | Ripple < 3% | Lifetime>50.000h | LM80 test report

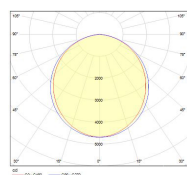
L max: 4551mm



Lighting



Photometric



Headoffice - Showroom: 13 Sofokli Venizelou Ave., Likovrisi, P.O. Box 14123, Athens, Greece. Tel: +30 210 28 51 304 Fax: +30 210 28 51 306

Factory - Financial Services: 5 Kefalovrisou Str., Monomati, Aharnai, P.O. Box 13677 Athens, Greece. Tel: +30 210 62 08 230 Fax: +30 210 62 08 262

website: www.bright.gr | **e-mail:** info@bright.gr